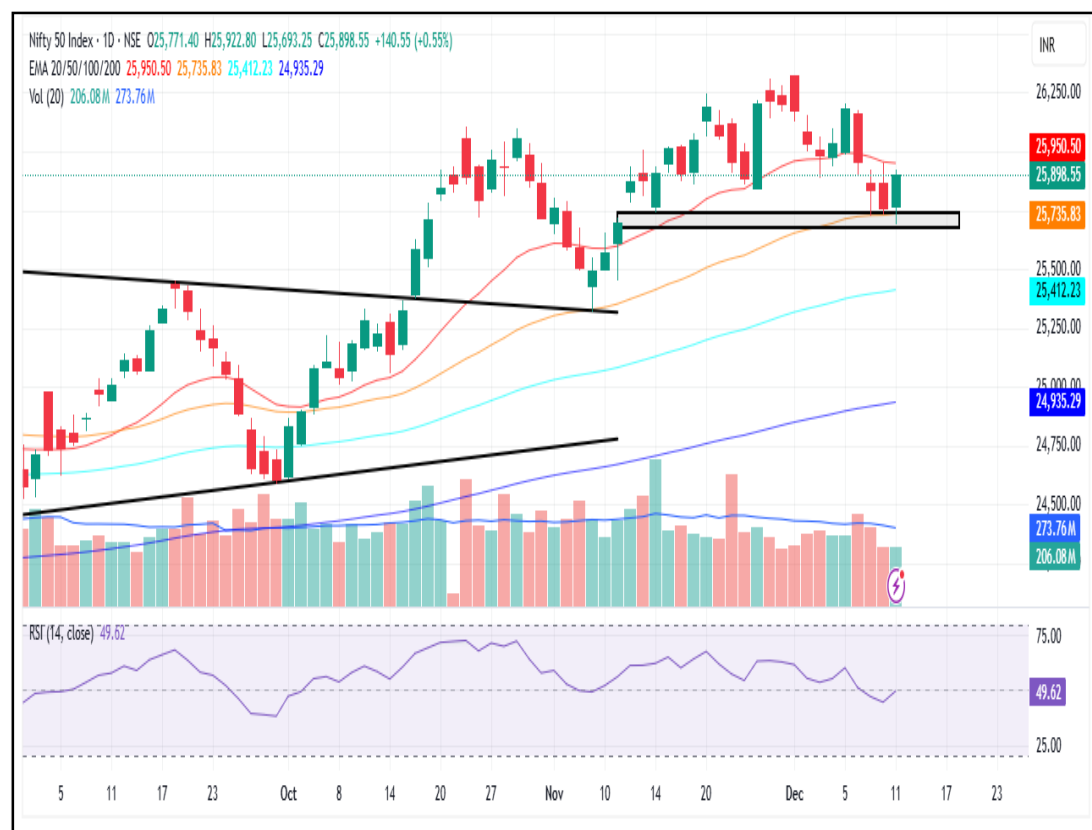


Nifty50

Closing price	R1	R2	S1	S2
25,898.55	25,950	26,000	25,800	25,730



- Nifty formed a bullish candle today after yesterday's sharp decline.
- The index took support at the highlighted horizontal demand zone around 25,730–25,760, indicating buyers stepped in at lower levels.
- Nifty continues to trade above key EMAs (50, 100, 200), keeping the medium-term trend bullish.
- However, the index is currently hovering just at the 20 EMA, showing some short-term consolidation.
- As long as the support near 25,730 holds, the near-term trend remains sideways to slightly positive, with potential for a bounce toward 25,950–26,000.

Bank Nifty

Closing price	R1	R2	S1	S2
59,209.85	59,700	60,000	59,000	58,950



- Bank Nifty formed a mild bullish candle today after yesterday's weakness, showing a controlled rebound.
- Price took support near the 59,000 zone, which aligns with the 20-day EMA (59,062) a crucial short-term support.
- Bank Nifty is trading above all major EMAs (20, 50, 100, 200), confirming a strong medium-term uptrend.
- Short-term trend is sideways-positive, with immediate support at 59,000–58,950 and resistance near 59,700–60,000.
- As long as price stays above the 20 EMA, Bank Nifty is positioned for a bounce toward 59,700 → 60,000 levels in the near term.

Global Market:

Global Indices	LTP	Change	Change %
Dow Jones	48,771.74	713.99	1.49
S&P 500	6,901.33	14.32	0.21
Nasdaq	23,591.84	-62.32	-0.26
FTSE	9,703.16	47.63	0.49
CAC	8,085.60	67.07	0.78
DAX	24,294.61	164.47	0.68

Sentiment Gauge



SIDEWAYS

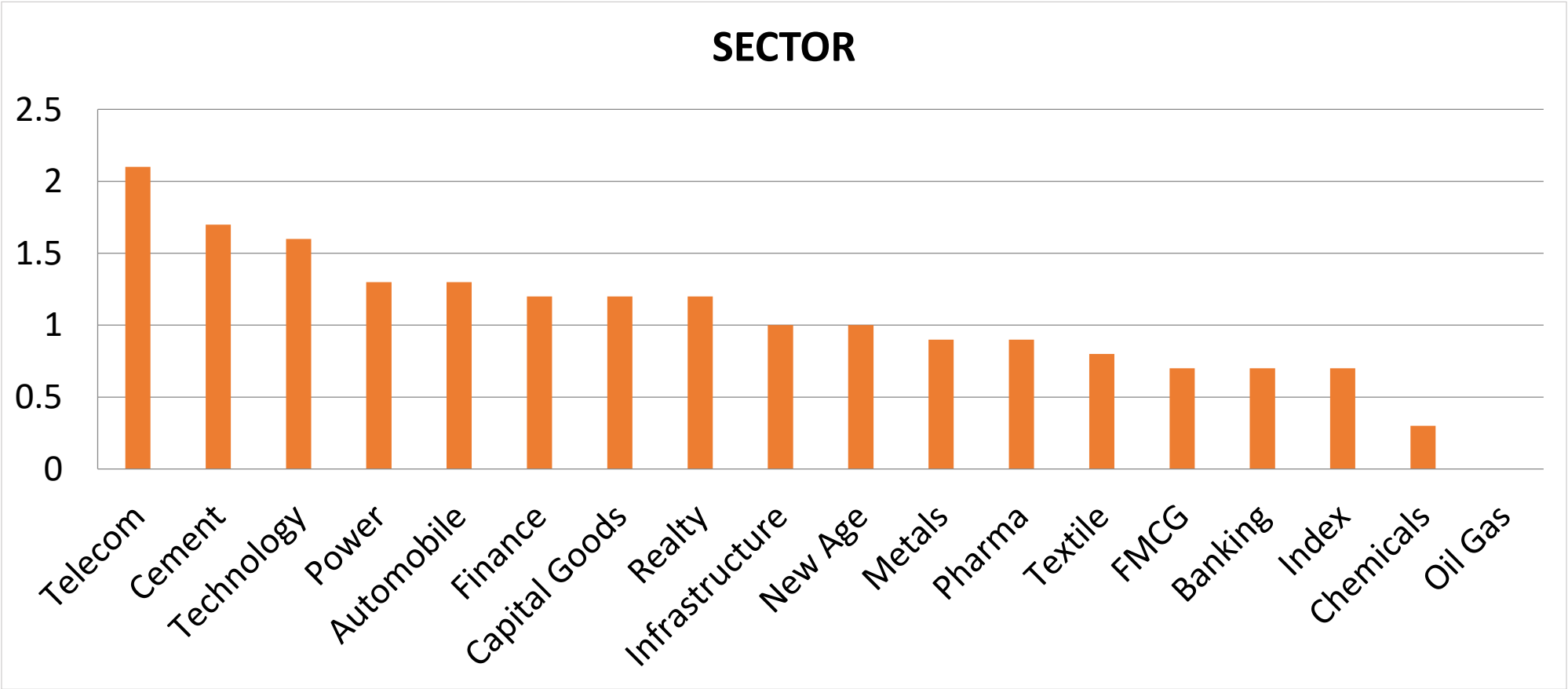
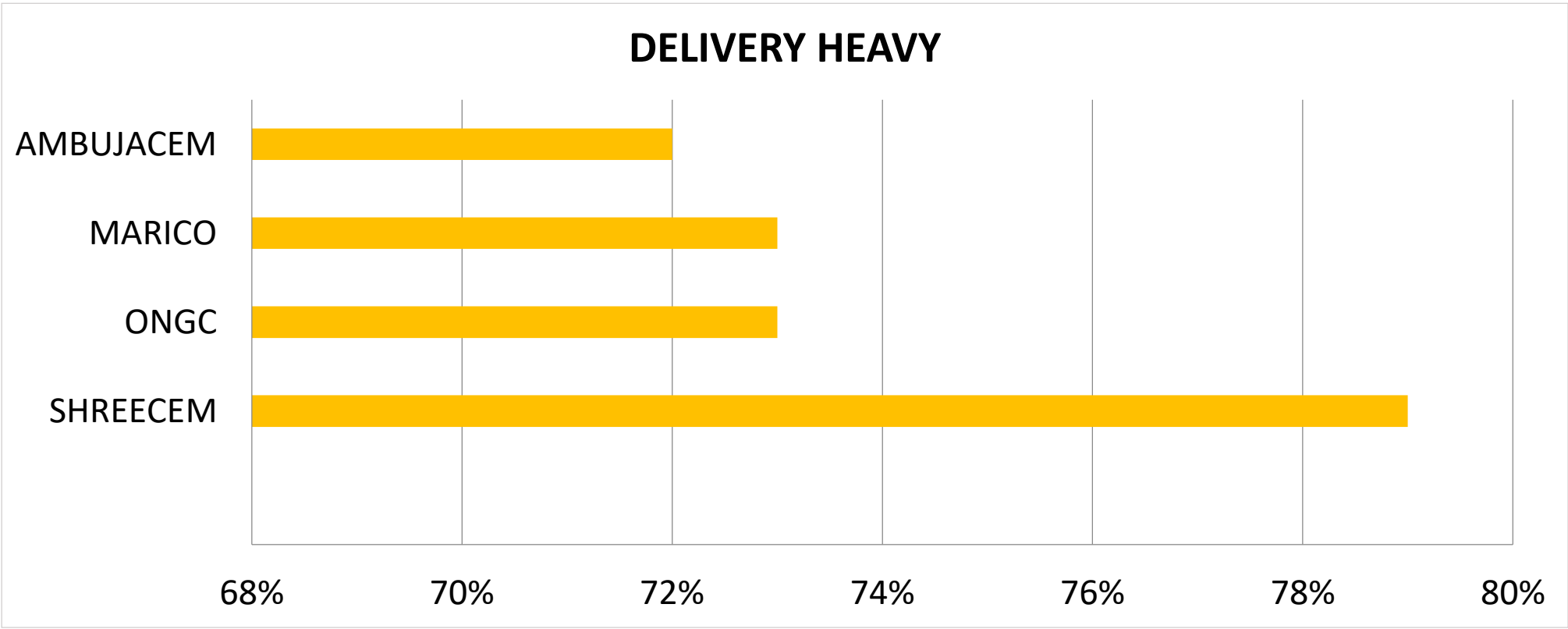
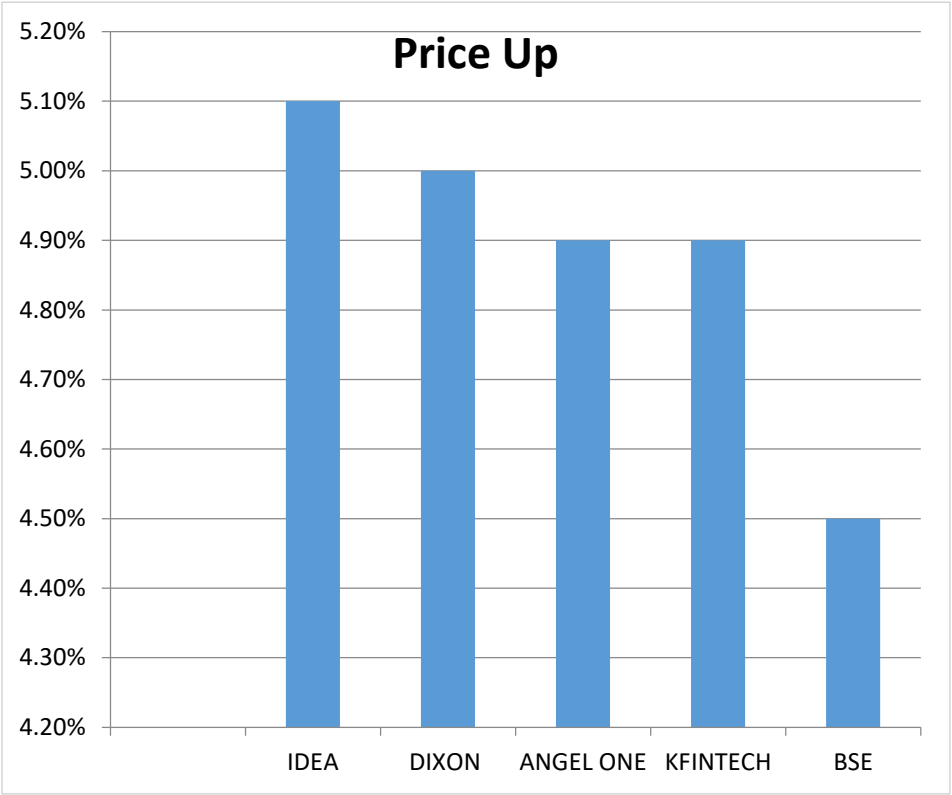
FII - DII Activities:

Activity	FII	DII
Cash	-2,020.94	3,796.07
Future	291.46	
Option	-10,086.93	-

Advance & Decline

Advance	185
Decline	28
A/D Ratio	6.60
PCR	0.94

figures collected from my fno



Economic Calendar

Time	Event	Expected	Previous
02:00:00	GBP - GDP (MoM) (Oct)	0.1%	-0.1%
02:00:00	German CPI (MoM) (Nov)	-0.2%	-0.2%

figures collected from investing.com

Intraday call

Stock Name	Buy In Range	SL	TGT
RAMCOSYS	654-659	642	678



Ramco Systems has delivered a strong breakout from the key resistance zone around 650, supported by a sharp rise in volume, indicating renewed buying interest. The stock is firmly positioned above its 20, 50, 100 and 200-day EMAs, confirming a sustained bullish trend. RSI is trending above 65 with strong momentum, validating bullish sentiment without signs of exhaustion.

Delivery call

Stock Name	Buy In Range	SL	TGT
MOTHERSON	119.40-120.40	114.60 (closing basis)	129



Samvardhana Motherson International is showing strong bullish momentum as the price has given a decisive breakout from the key resistance zone near 118–120 with healthy volume, indicating fresh accumulation. The stock is trading firmly above its 20, 50, 100, and 200-day EMAs, confirming a well-established uptrend. RSI is sustaining above 60 with a positive slope, reflecting strong underlying strength.

Nifty 50 Snapshot

SYMBOL	LTP	CHNG	%CHNG	R1	R2	S1	S2
NIFTY 50	25,898.55	140.55	0.55	25,950	26,000	25,800	25,730
ADANIENT	2,270.20	58.6	2.65	2,336	2,403	2,204	2,138
JIOFIN	298.5	7.65	2.63	305	311	292	286
TATASTEEL	166.4	4.17	2.57	169	172	164	161
ETERNAL	290	6.75	2.38	296	303	284	277
KOTAKBANK	2,173.30	43.8	2.06	2,233	2,293	2,114	2,054
DRREDDY	1,274.90	24.1	1.93	1,295	1,314	1,255	1,236
GRASIM	2,796.20	49.4	1.8	2,838	2,879	2,755	2,713
CIPLA	1,512.00	21.1	1.42	1,528	1,545	1,496	1,479
SHRIRAMFIN	848.35	11.1	1.33	858	868	838	828
MARUTI	16,220.00	201	1.25	16,433	16,646	16,007	15,794
SUNPHARMA	1,807.00	21.5	1.2	1,831	1,855	1,783	1,759
ULTRACEMCO	11,451.00	134	1.18	11,591	11,731	11,311	11,171
TECHM	1,569.00	18.2	1.17	1,589	1,608	1,549	1,530
MAXHEALTH	1,089.10	12	1.11	1,100	1,112	1,078	1,066
TRENT	4,060.60	42.3	1.05	4,143	4,226	3,978	3,895
TMPV	346.95	3.55	1.03	351	356	343	338
HDFCBANK	999.9	10.1	1.02	1,010	1,020	990	980
M&M	3,658.60	28.6	0.79	3,694	3,730	3,623	3,587
ADANIPORTS	1,509.10	11	0.73	1,523	1,537	1,495	1,481
BAJAJ-AUTO	9,057.00	66	0.73	9,137	9,217	8,977	8,897
INFY	1,596.20	11.4	0.72	1,615	1,633	1,578	1,559
NESTLEIND	1,217.00	7.7	0.64	1,227	1,236	1,207	1,198
JSWSTEEL	1,102.80	6	0.55	1,114	1,124	1,092	1,081
HDFCLIFE	775	3.95	0.51	784	792	766	758
COALINDIA	384.1	1.95	0.51	387	390	381	378
WIPRO	259.2	1.22	0.47	261	262	258	256
RELIANCE	1,543.00	6.1	0.4	1,559	1,575	1,527	1,511
NTPC	322.9	1.3	0.4	326	328	320	318
HCLTECH	1,672.40	6.4	0.38	1,690	1,708	1,655	1,637
HINDALCO	824.75	3	0.37	832	838	818	811
INDIGO	4,821.50	16	0.33	4,979	5,137	4,664	4,506
HINDUNILVR	2,309.00	7.3	0.32	2,323	2,336	2,295	2,282
SBIN	962.6	2.85	0.3	968	973	957	952
LT	4,003.00	11.7	0.29	4,023	4,043	3,983	3,963
TATACONSUM	1,143.00	2.9	0.25	1,156	1,170	1,130	1,116
BEL	388.2	0.85	0.22	391	395	385	382
TCS	3,193.90	4.7	0.15	3,232	3,270	3,156	3,118
TITAN	3,850.00	4.3	0.11	3,903	3,955	3,797	3,745
EICHERMOT	7,235.00	6.5	0.09	7,309	7,383	7,161	7,087
BAJAJFINSV	2,065.10	-0.7	-0.03	2,088	2,110	2,043	2,020
ITC	403	-0.15	-0.04	405	407	401	399
APOLLOHOSP	7,010.50	-8	-0.11	7,068	7,125	6,953	6,896
AXISBANK	1,276.80	-1.8	-0.14	1,284	1,291	1,270	1,263
ICICIBANK	1,361.00	-2.6	-0.19	1,370	1,379	1,352	1,343
BAJFINANCE	1,008.40	-1.9	-0.19	1,021	1,033	996	983
ONGC	238.76	-0.53	-0.22	241	243	237	235
POWERGRID	264.75	-0.75	-0.28	267	270	262	260
BHARTIARTL	2,054.00	-13	-0.63	2,076	2,098	2,032	2,010
SBILIFE	1,997.10	-17.4	-0.86	2,012	2,027	1,982	1,967
ASIANPAINT	2,776.50	-28	-1	2,809	2,841	2,744	2,712
ETERNAL	297.4	-11.4	-3.69				

Ms. Harshita Darak

Technical Analyst

Disclosure:

M/s. Bonanza Portfolio Ltd hereby declares that the views expressed in this report accurately reflect its viewpoint with respect to the subject companies/securities. M/s. Bonanza Portfolio Ltd has taken reasonable care to achieve and maintain independence and objectivity in making any recommendations. The analysts engaged in the preparation of this report or their relatives: (a) do not have any financial interests in the subject company mentioned in this report; (b) do not own 1% or more of the equity securities of the subject company mentioned in the report as of the last day of the month preceding the publication of the research report; (c) do not have any material conflict of interest at the time of publication of the report. (d) have not received any compensation for products or services other than investment banking, merchant banking, or brokerage services from the subject company in the past twelve months; (e) have not received any compensation or other benefits from the subject company or any third party in connection with this report; (f) have not served as an officer, director, or employee of the subject company; (g) are not engaged in market-making activity for the subject company;. M/s. Bonanza Portfolio Ltd is a registered Research Analyst under the SEBI (Research Analyst) Regulations(h) are not engaged in the use of artificial intelligence, 2014. The registration number is INH100001666, and the research analysts engaged in preparing reports are qualified as per the provisions of the regulations.

Disclaimer:

This research report has been published by M/s. Bonanza Portfolio Ltd and is meant solely for the use of the recipient and is not for circulation. This document is for information purposes only, and the information, opinions, and views are not meant to serve as a professional investment guide for the readers. Reasonable care has been taken to ensure that the information given is believed to be fair and correct at the time, and the opinions based there upon are reasonable. However, due to the nature of research, it cannot be warranted or represented that it is accurate or complete, and it should not be relied upon as such. If this report is inadvertently sent or has reached any individual, it may be ignored and brought to the attention of the sender. Preparation of this research report does not constitute a personal recommendation or take into account the particular investment objectives, financial situations, or needs of individual clients. Past performance is not a guide to future performance. This report has been prepared on the basis of publicly available information, internally developed data, and other sources believed by Bonanza Portfolio Ltd to be reliable. This report should not be taken as the only basis for any market transaction; however, this data represents one of the supporting documents among other market risk criteria. Market participants should be aware of the risks involved in using this information as the sole source for any market-related activity.

“Investments in securities markets are subject to market risks. Read all the related documents carefully before investing.”

“Registration granted by SEBI, membership of BSE, and certification from NISM in no way guarantee the performance of the intermediary or provide any assurance of returns to investors.”

The distribution of this report in certain jurisdictions may be restricted by law, and persons in whose custody this report comes should observe any such restrictions. The disclosures of interest statements included in this analysis are provided solely to improve transparency and should not be treated as an endorsement of the views expressed in the analysis. The price and value of the investments referred to in this report and the income from them may go down as well as up. Bonanza Portfolio Ltd or its directors, employees, affiliates, or representatives do not assume any responsibility for, or warrant the accuracy, completeness, adequacy, or reliability of such information, opinions, or views.

While due care has been taken to ensure that the disclosures and opinions given are fair and reasonable, none of the directors, employees, affiliates, or representatives of M/s. Bonanza Portfolio Ltd shall be liable. Research reports may differ between M/s. Bonanza Portfolio Ltd Research Analysts and other entities on account of differences in personal judgment and time horizons for which recommendations are made. The research entity has not been engaged in market-making activity for the subject company. The research analyst has not served as an officer, director, or employee of the subject company and has not received any compensation or benefits from the subject company or any third party in connection with this research report.

Bonanza Portfolio Ltd.

Bonanza House, Plot No. M-2, Cama Industrial Estate, Walbhat Road, Goregaon (E), Mumbai – 400063 Phone: 022-68363794/708 Website: <https://www.bonanzaonline.com> SEBI Regn. No.: INZ000212137 BSE CM: INB 011110237 | BSE F&O: INF 011110237 | MSEI: INE 260637836 | CDSL: 120 33500 | NSDL: a) IN 301477 | b) IN 301688 (Delhi) | PMS: INP 000000985 | AMFI: ARN -0186

Compliance Officer: Manoj Kumar Goel, 022-62735507, compliance@bonanzaonline.com